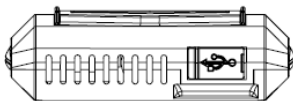
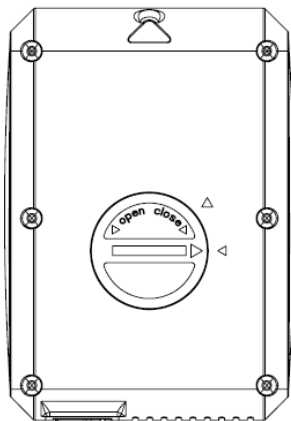
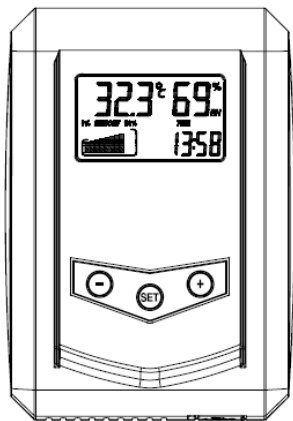


# USB Temperatuer and Humidity Data Logger Instruction Manual



## **1. Introduction**

Thank you for choosing this item for your data logging requirement. Small simple and affordable, data logger can measure and record data at specified intervals ranging from once every 60 seconds to once every 4hours. It is our goal to bring you accurate, low-cost, easy-to use data logger that integrate easily into the user's working environment.

### ***1.1 Package Contents***

- 1x data logger unit
- 1x USB cable
- 1x CD ROM
- 1x 3 V lithium battery
- Instruction manual

### ***1.2 Fetures:***

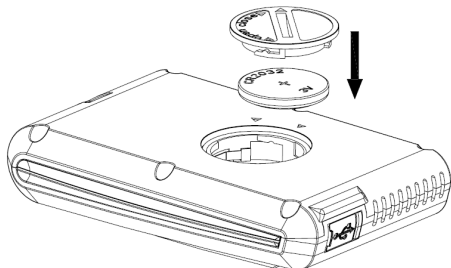
- Measure and log termperatuer and humidity data
- Instant data download with PC/laptop
- USB interface for set-up and data download
- Easily re-configurable using included software
- Selectable logging intervals from 1minute to 4 hours (default 1minute)
- Selectable measurement in °F or °C
- Time, date and unit synchronized your PC

## 2. Installation

### 2.1 Insert battery

When the unit is powered up, all LCD segments will light up for about 3 seconds

**Caution:** Do not reverse polarity of the batteries



### 2.2 Wall amount

You can mount this item on a wall by using a screw (not included)

## 3. Function:

### “SET” BUTTON:

- In normal display, press “SET” button to alternate the display of time and logging intervals
- In normal display, long press “SET” button to enter setting mode

### “+” BUTTON:

- In normal display, press “+” button to alternate the display of time and date
- In setting mode, press “+” button to increase the value of information being set.

### “-” BUTTON:

In setting mode, press “-” button to decrease the value of information being set.

## **4. Program Mode**

### **SETTING MODE:**

- Long press “SET” button to enter Set Mode
- Press the “SET” button to select the following setting in sequence:
  - 1) 12/24 hour format
  - 2) Manual time setting (hour/minutes)
  - 3) Calendar setting (year/month/date)
  - 4) Temperature display unit degree Celsius or Fahrenheit
- The setting mode will return to normal display while button idle 30s

### **SLEEP MODE:**

- The device will automatically enter sleep mode if no button is pressed for 2 minutes. Press any button to exit sleep mode.
- Time, date and weather trackers still function while in sleep mode. Battery life is extended if in sleep mode.

### **MEMORY MODE:**

The date sets are being stored in non-volatile ring buffer memory (EEPROM) and will not be lost even in case of an interruption of power supply (e.g. change of batteries). There are 10 bar graphs to indicate the memory store capacity. One bar graph is indicate 10% memory. In case the memory capacity is exhausted the oldest data sets stored will be overwritten by the new ones entered.

## **5. Software**

### **5.1 System requirements**

To install the software onto your PC, the minimum requirements are as follows:

Operating System: Windows XP, Windows Vista.

Internet Explorer 6.0 or above

Processor: Pentium III 500 MHz or above

Memory: at least 128MB, 256MB recommended

CD-ROM Drive

Data logger and PC must be connected by USB cable

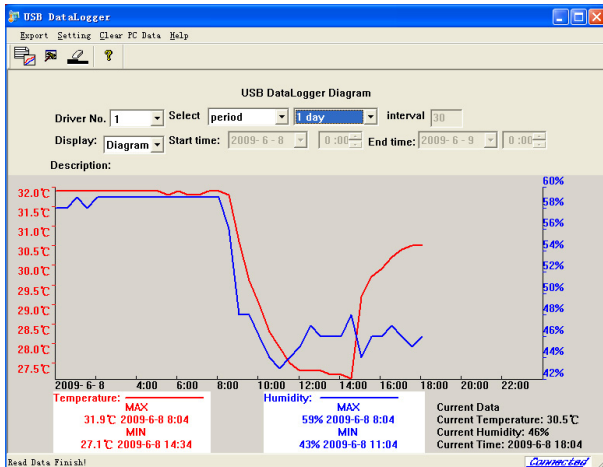
### **5.2 Installation of the Software**

1. Switch on your PC and insert the CD-ROM into the CD-ROM Drive.
2. Double click "Setup.exe"
3. Select the installation process language option and click next
4. click next and select the destination folder(change directory when needed)
5. click next and the software will be installed automatically
6. press ok to finish the installation process
7. From "Start—All Programs—USB data logger" path and double click the "Data logger" icon to start application.

Note: The graphic function needs the software to be installed under the administrator account. If it is installed under limited user accounts, the graphic function of the software might not be working correctly.

### 5.3 Basic Settings of the “EasyWeather” Software

After the “Datalogger.exe” program has been started, the following main window will appear on the PC screen:



All the settings from the base unit is mirrored into the PC software, so once you have done your setting on the base unit, then you don't need to make any setting changes on the PC software. However you can still easily make any setting changes you wanted from the PC and download the changes into the base station (the setting change will be refreshed when next full minute arrives on the base station).

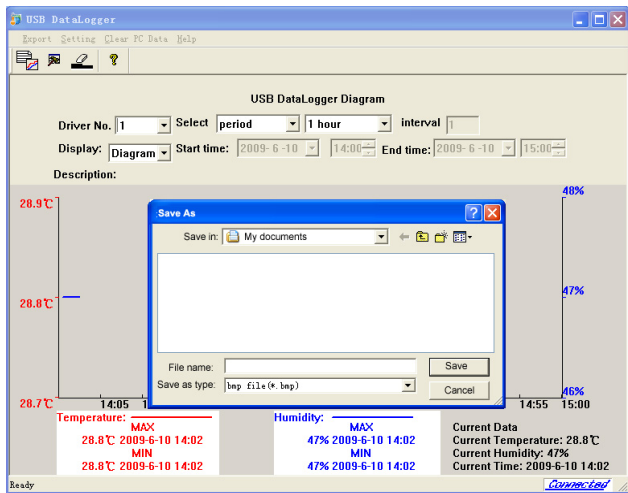
When base unit is connected to PC, the icon of  will be displayed. If no base station is connected, then  will be displayed.

If you have purchased additional data logger, the data loggers will be numbered in the order of connection to PC. i.e. the first data logger will number as "Driver No. 1"

## Function button:



: Export image or csv file



Press this button to save the image or text to the destination folder to keep a back up history file. You can choose the diagram or text by pull-down list of “Display” field



: Set the parameter

Setting

Temperature Unit: ☒ C ☐ F MD/DM ☐ MD ☒ DM

No.: 1 Unit Version: 1.02

Description:

Interval:

Start time End time

1.	2009-5-21	0:00	2009-5-21	2:00	Cancel
2.	2008-5-22	3:00	2008-5-22	6:00	Cancel
3.	2008-5-22	2:00	2008-5-22	3:00	Cancel
4.	2008-5-22	1:00	2008-5-22	2:00	Cancel

OK Cancel

This section is used to set up PC software display. Once you made your choice, press OK to make the setting effective.

Description define for data segment, you can set up to 4 segments data.



Clear PC data:

Press this button to clear all history data on PC.



### ***Clear the history data in data logger***

Press **SET** button while you insert the battery to power up the unit.

### **SPECIFICATION:**

Memory	: Max 16,320 temperature and relative humidity readings
Logging Interval	: 60 seconds to 4 hours
Mearsure Temperature Range:	-40 to 60°C
Temperature accuracy	: +/-1.0°C under 0-50°C
Mearsures humidity range	: 10%-99%RH
Humidity accuracy	: +/-4% under 20%-80%
Software	: Windows XP, windows Vista
Power	: single 3 V lithium battery (included)
Battery Life	: 1 year typical (depends on sample rate, ambient temperature)
Dimensions	: 87x60x19mm